

# SUMMER 2018 UPDATE

## THE 'TASA' CHEQUE DAY STUDY



### RECRUITMENT IS COMPLETE

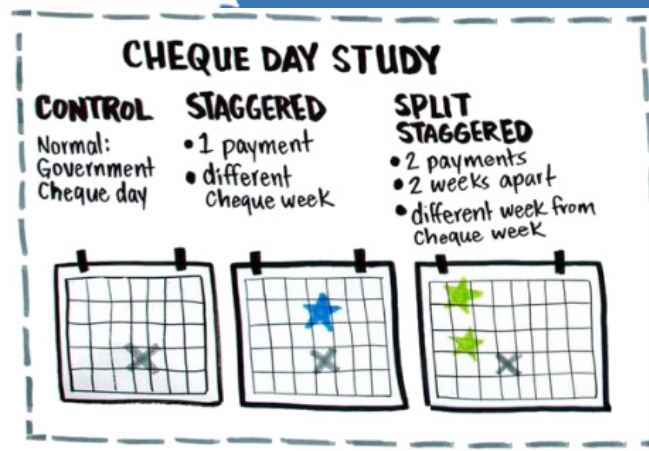
After almost three years, the Cheque Day Study has finished recruitment! Thank you for the important part you played in reaching this milestone.

As we near the end of data collection we wanted to provide a brief update about what we've been up to, and what will be coming next.

### THE STUDY

Income assistance is a critical tool in helping lessen some of the harms of poverty. However, in British Columbia income assistance is delivered once a month, to all recipients on the same day and on this day we see intensified and riskier drug use, followed by sharp increases in community-wide harm (overdose, hospital admissions, violence etc.).

The Cheque Day Study is looking at whether changing the timing and frequency of income assistance payments would decrease drug use and related harm. Volunteer participants were randomly assigned to either receive their cheque as normal (control), staggered on a week outside of government payment week, or split in two and paid two weeks apart, again outside of cheque week. *To learn more about the study visit [bccsu.ca/Cheque-Day-Study](http://bccsu.ca/Cheque-Day-Study).*



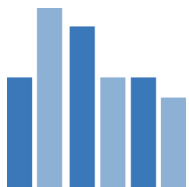
**CAN WE IMPROVE THE WAY INCOME ASSISTANCE IS PAID?**



**Recruitment has finished, with a total of 194 participants enrolled.**



**Participants spend 6 months on the intervention and provide information about their drug use, health and safety, income generation, and service usage.**



**Data collection will end in October 2018 when the final participant finishes the study.**



**121 qualitative interviews were conducted that will help us understand participant experiences of being on the interventions.**

# WHAT ELSE HAVE WE BEEN UP TO?

As the study has been underway, we've been speaking with stakeholders to better understand community priorities, how different people experience cheque day, and what potential impacts might be if the schedule of income assistance payments were to change.

This engagement has included consultation with residents of eight communities across BC, recipients of income assistance, service providers, policy makers, and first responders.

Some of the key considerations that have emerged from these conversations include:

- Any change must ensure consistent and equal access to income assistance regardless of drug use patterns.
- People have talked about how low rates of income assistance keep them in poverty. And how this, combined with the payment schedule, contributes to the effects we see around payment days.
- Support services would need to be adapted to meet client needs across the month.

- There is potential for increased vulnerability when payments are staggered if people who have money are targeted by those who are waiting for payments.

- Tailored support, individualization of services and choice can play an important role in ensuring income assistance works best for each individual.

These and other considerations will be compiled into a *Community Impact Statement* that will be shared alongside scientific results.



**35 presentations/  
consultations**



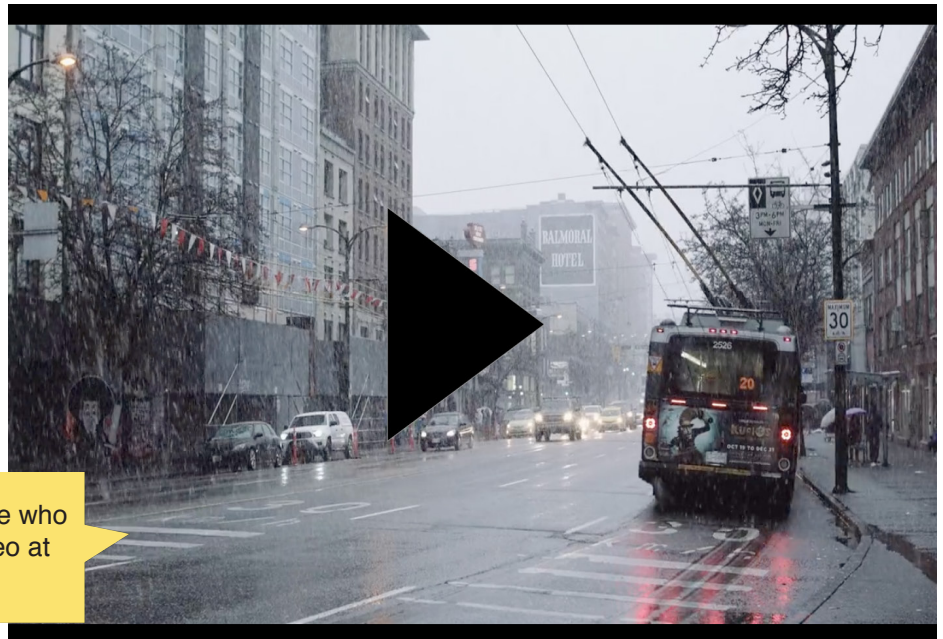
**7 community events**

**50+ community  
organizations/service  
providers**



**500+ individuals from  
8 communities across  
British Columbia**

Hear about what cheque day is like from people who experience it every month. Watch a short video at [bccsu.ca/Cheque-Day-Study](https://bccsu.ca/Cheque-Day-Study)

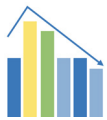


# WHAT'S COMING NEXT?



## Community Impact Statement

Findings from the consultation work we have been doing will be compiled into the Community Impact Statement that will be shared alongside scientific results.



## Data analysis

Data analysis will begin in the fall once the final participant has finished their 6-month study period. Data from 194 participants as well 121 qualitative interviews will inform results.



## Knowledge translation

Study results will be shared with different audiences through briefing notes, publications, summary reports, presentations, infographics and different ways of storytelling.

# WANT TO PROVIDE INPUT?

Are you affected by cheque day, and want to provide your perspective?

Or do you want to be kept informed when results are available?

Please contact our Knowledge Broker: Joanna Mendell, [joanna.mendell@bccsu.ubc.ca](mailto:joanna.mendell@bccsu.ubc.ca)  
[bccsu.ca/Cheque-Day-Study](https://bccsu.ca/Cheque-Day-Study)