

ASSETS

778-945-5681
assets@bccsu.ubc.ca
439 E. Hastings St.
(VIDUS)

2022 Fall Update

Assessing Economic Transitions Study

THE STUDY

The ASSET Study is interested in the many different ways people make money in the community and how that effects their health and well-being.

WHO WE TALK TO

People who work for and train with peer programs, social enterprises, local government initiatives, community organizations, DTES employers and a range of informal and part-time employment.

COMMUNITY PRIORITIES

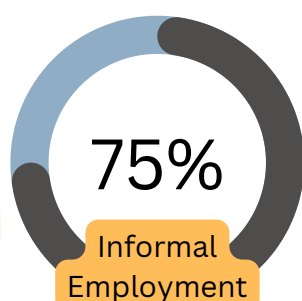
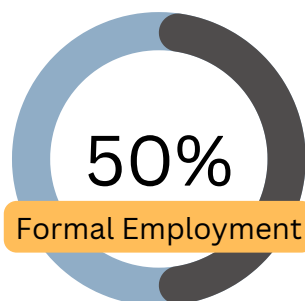
The ASSET study was developed in collaboration with DTES economic opportunity providers to explore experiences and outcomes across the income generation spectrum.

READ OUR RESEARCH PAPER:

In August 2022, we published our first article describing the study in the International Journal of Environmental Research and Public Health. You can view it here: [The Assessing Economic Transitions \(ASSET\) Study-A Community-Based Mixed-Methods Study of Economic Engagement among Inner-City Residents.](#)



Types of employment our participants are engaged in:



OUR AIM IS TO IDENTIFY SUCCESSES, BARRIERS AND OPPORTUNITIES THAT SUPPORT POLICY AND PROGRAM CHANGE THAT WORKS FOR THE COMMUNITY.



WHAT WE'VE BEEN DOING

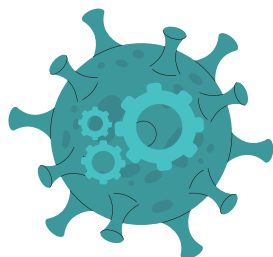
AND WHAT'S UP NEXT...

3+ YEARS OF DATA COLLECTION

The ASSET Study began seeing eligible participants after extensive preparation and community collaboration in April 2019. We've been collecting data on people's economic participation and well-being since. We plan to enrol a total of 450 people in the study.

ASSETS GOES REMOTE

Under the pressures of the Covid pandemic our team (and participants) adapted by conducting interviews over the phone or Zoom to keep the study running throughout the pandemic. We resumed seeing participants in-person in April 2022 and continue to talk to people remotely when preferred or needed.

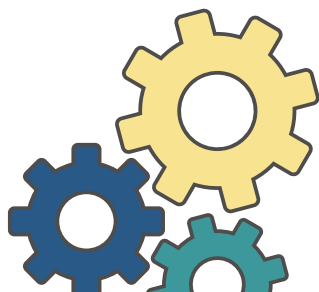


COVID DATA

We began collecting Covid specific data in July 2020. Because we started collecting data a year before the pandemic, we will be able to assess the employment, health, and overdose impacts of COVID-19, including organizational and government responses.

READY FOR ANALYSIS

We have conducted **1851 surveys and 111 long form interviews** so far and analyses are underway. Building on our existing community partnerships and government relationships, we are currently establishing a Community Advisory Board and Indigenous Research Advisory Board to inform the direction of our research efforts.



KNOWLEDGE EXCHANGE

One of our key aims with the study is to share anonymous data with opportunity providers in the hopes that this data can assist programs to evaluate their services, apply for funding, and address barriers to employment and economic security in the DTES.

Please contact our Research Coordinator Deb McCormack with any questions or requests.

INTERESTED IN PARTICIPATING?

Know somebody who might be? Please feel free to contact us at 778-945-5681. Or drop by our office at 439 E. Hastings.

WE CONTINUE TO RECRUIT PARTICIPANTS WHO:

- Live in Vancouver
- Age 19+
- Currently working, training or doing paid volunteering with community organizations

